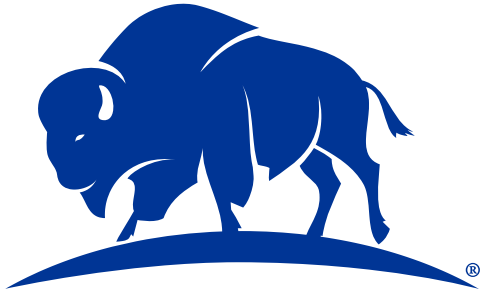


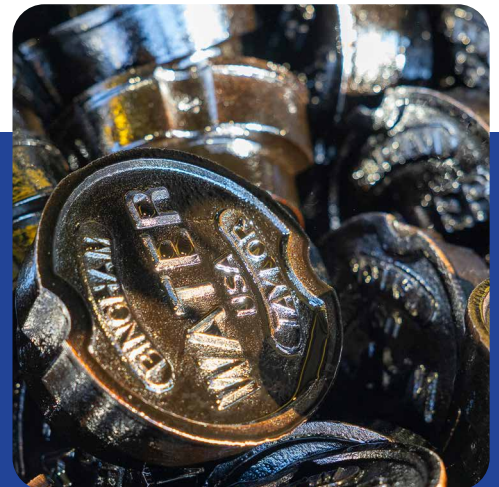
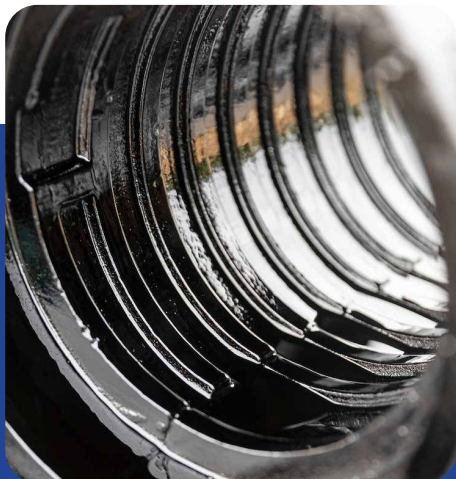
Southwest Region



BINGHAM & TAYLOR

Proudly Made in the USA

WATERWORKS UTILITY PRODUCTS



BINGHAM & TAYLOR

Built to perform. Trusted to last.

Bingham & Taylor delivers innovative, comprehensive, and customizable underground utility access solutions—providing safe, easy, and secure access to critical water and sewer services.

100% AMERICAN MADE: All products are proudly made in the USA and fully compliant with AIS and Build America, Buy America (BABA) requirements.

SINCE 1849: We invented the Buffalo-style box—setting the standard for utilities ever since.

DESIGNED FOR DEMANDING ENVIRONMENTS: Our cast iron and plastic products are built for strength, impact resistance, and lasting durability.

BUILT TO YOUR SPECIFICATIONS:

We offer customized solutions including powder coating, specialty lettering, logos, and utility-specific designs.

FOCUSED ON QUALITY: With in-house engineering and metallurgy, we ensure product consistency from foundry to field.

EXCLUSIVE BISON™ BOXES

Bison Boxes offer a durable, lightweight alternative to imported cast iron, **weighing less than 25% of an all cast iron equivalent box**. Made with thick-walled ABS plastic, they reduce shipping costs and installer fatigue while delivering long service life and strength. When installed with the cast iron rim or top section embedded in concrete or asphalt, Bison valve boxes are H-20 load rated—ideal for demanding utility environments.

- **Bison Boxes** Bison top and bottom sections paired with a cast iron rim and lid.
- **Bison CIP Boxes** a Bison ABS plastic bottom paired with a cast iron top section and lid—reducing weight and cost vs. a full cast iron box while retaining cast iron's strength and locatability.

BISON VALVE BOXES

- **Bison Valve Boxes** feature a cast iron rim and lid with thick-walled ABS plastic top and bottom sections. Choose from 2-piece or 3-piece configurations. Available in screw- and slide-type adjustment, with various bottom bells available to suit different applications. These boxes are completely interchangeable with our 5¼" Buffalo-style cast iron valve boxes.
- **Bison CIP Valve Boxes** combine lightweight Bison ABS plastic for the bottom section with a standard cast iron top section and lid.

BISON CURB BOXES

- **Bison Curb Boxes** feature a cast iron rim and lid with brass bolt, plus thick-walled ABS top and bottom sections. Available in screw- or slide-type adjustment with optional carbon steel or stainless steel rods and centering rings.
- **Bison CIP Curb Boxes** combine a lightweight Bison ABS plastic bottom with a cast iron top section and lid with brass bolt.



CAST IRON VALVE & CURB BOXES

- **4¼" Roadway Valve Boxes:** For valves up to 3". Installed in the roadway or behind the curb. Available with arched or closed bottom to cover the operating nut.
- **5¼" Buffalo-style Valve Boxes:** Available in 2-piece (lid, top, bottom) to cover just the stuffing box or 3-piece (lid, top, middle, bottom) that cover the entire valve. Choose screw- or slide-type adjustment.
- **7" Buffalo-style Valve Boxes:** 3-piece assemblies (lid, top, middle, and base sections) that cover the entire valve. Two base styles available.
- **Valve Box Accessories:** Includes extensions, paving risers, heavy-duty tri-skirt and long-skirt lids, locking lids, repair lids, valve box stabilizers, paving risers, valve sentinels, and custom lids. Two base styles available.
- **Buffalo-style Curb Boxes:** Available in 2½" and 3". Includes a cast iron lid with brass bolt, top and bottom sections, and your choice of New Style, New Style Flush, or Old Style lid. Available in screw- or slide-type with multiple extension ranges. Optional Enlarged base, foot pieces, centering rings, and carbon steel or stainless steel rods.



MARK SERIES HEAVY-DUTY VALVE BOXES

Mark Series Cast Iron Valve Boxes: Heavy-duty cast iron valve boxes that fit over 8" PVC. H-20 load rated for strength, stability, and long-term performance in the field. The **Mark V** is available in 10" round with or without bottom flange or triangular with bottom flange. The **Mark VII** is a round box with a 10.25" inner diameter and a bottom flange.



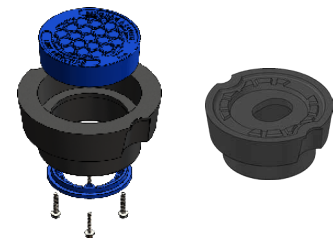
CLEANOUT BOXES

- **Performance:** Durable solutions for easy access to cleanout points in sewer and drainage systems.
- **Sizes & Materials:** Available in 4", 6", and 8" for sewer and drainage applications; offered in all cast iron or a combination of cast iron and plastic.



LEAK DETECTION

- **Insert & Lid Assembly:** Drop-in insert with sensor-ready lid for valve boxes—delivering clear signal transmission while providing a protective housing for antennas and leak detection sensors.
- **Cast Iron Lid with Thru-Hole:** Provides direct signal transmission for leak detection sensors, ensuring strong, reliable communication and accurate system monitoring.



STABILIZERS

- **Critical Support & Alignment:** Stabilizers keep the valve box centered over the operating nut while minimizing shifting and settling over time.
- **Protective Design:** Helps prevent backfill intrusion and protects epoxy-coated valves from damage—supporting long-term performance.



VALVE SENTINELS

- **Security & Tamper Protection:** Prevents unauthorized access and shut-offs with a patented two-piece lock-out system. Use your own lock for easy lock-out/tag-out.
- **Durable & Customizable:** Made from carbon steel with color-coded plates (yellow, blue, red). Fits valve boxes from 3¾" to 12¾".



METER ACCESS SOLUTIONS

- **High-Strength Meter Pits:** Engineered to withstand up to 20,000 lbs. of vertical load and injection-molded for consistent wall thickness. Lightweight, durable, and easy to install. Available in 18", 20", and 24" diameters with optional extensions.
- **Ribbed-Base Meter Pits:** Designed to resist settling and maintain alignment, delivering rigidity for long-term stability in soft soils. Available in 15", 18", 20", 30", and 36" diameters with optional extensions.
- **Meter Pit Frames:** Cast iron frames provide strength, load-bearing capacity, and resistance to environmental wear. Composite frames are over 3.5x lighter while supporting a 20,000 lb. proof load and improving AMI/AMR transmission.
- **Meter Pit Lids:** Cast iron lids available in solid, touch-read, or radio-read styles. Maverick™ composite lids offer a lightweight, non-conductive option for improved transmission, with recessed thru-hole options for radio-read systems.
- **Cast Iron Meter Boxes:** Tested to exceed a 53,000 lb. proof load. Deeper cover seat area helps prevent dislodged lids. Available with ADA-compliant cast iron or Maverick lids in solid or recessed thru-hole styles.



TRACER WIRE & CATHODIC PROTECTION TEST STATIONS

Cathodic Protection Test Stations: The cast iron rim is key for locating, with select styles featuring a permanent magnet for easier detection. Flared bottoms prevent pullout or settling. Available in 2½", 4", and 5¼" diameters and various lengths. A wide range of rims supports light duty, concrete, or asphalt installations. Choose from round or square lids in cast iron or plastic, with options for pentabolt, drop-in, or drop-turn locking. **Tracer Wire Boxes** provide direct connections to tracer wire. Paving risers, terminal jumpers, and shunts available.



TOOLS

Lid Lifter Tool: Durable, lightweight, and engineered for maximum leverage—removes even the heaviest utility lids with ease. A must-have tool for every truck. **Pentabolt Hand Tool:** Unlocks AWWA #1 and #2 pentabolts. Doubles as a pry bar for clearing debris and lifting lids. Compact and ergonomic for comfortable, all-day use.

© 2026 Bingham & Taylor Inc. All rights reserved. Bingham & Taylor, the buffalo logo, Maverick, and Bison are trademarks or registered trademarks of Bingham & Taylor Inc.

bandt-us.com

THE BINGHAM & TAYLOR DIFFERENCE

Bingham & Taylor delivers the industry's most diverse product line with reliable service, quality craftsmanship, and deep expertise. We proudly manufacture all our products in the USA—supporting American jobs, supply chain reliability, and federal compliance. Our commitment to innovation, collaboration, and sustainability drives us to continually improve and meet the evolving needs of our customers. We believe that if we're not moving forward, we're falling behind.



HUGH M. CUNNINGHAM COMPANIES

BINGHAM & TAYLOR TEAM
AR • LA • MS • NM • OK • TX

Team9@hughcunningham.com | (800) 339-0191
hughcunningham.com/manufacturers/bingham-taylor